

Charlton Mews

A prestigious development of 3 bedroom houses and 2 bedroom apartments

•WD BUILDING COMPANY•

Streets ahead!



Supreme Quality

W D Building Company have earned a reputation for exceedingly well constructed properties built to the highest standards of craftsmanship. Charlton Mews combines value for money with a mix of high performance traditional and modern materials to give long term peace of mind.

Convenient Locations

Located on Maybury Road, these residencies are well placed for ease of travelling into the city centre or north to Beverley and the east coast. Maybury Road also provides a direct link through to the A1033/A63 and out to the west of Hull. The area is also served by a good bus service.

Excellent Local Amenities

East Park and the Woodford Leisure Centre are close to hand as too are a Morrisons and ASDA superstore. For those with young families there are a range of excellent primary and secondary schools nearby. Doctors, dentists and local shops are all within walking distance making this a popular area to live.



Charlton Mews

A prestigious development of 3 bedroom houses and 2 bedroom apartments



For more details call:

01482 **787555**

www.larardsresidentialsales.co.uk

Specifications

This select development of town houses and apartments offers high specification contemporary interiors that make wonderful use of space.

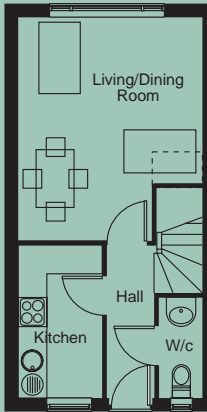
All the properties benefit from UPVC double glazing, are carpeted throughout and have security alarms fitted. The fitted bathrooms come with a choice of complimentary tiles.

Each house has gas central heating and the fitted kitchens are appointed with oven and hob, fan, fridge/freezer and dishwasher.

The apartments benefit from electric powered central heating and the fitted kitchens are appointed with oven and hob, fan, fridge/freezer and washer/dryer.

All properties have an allocated off road car parking space.

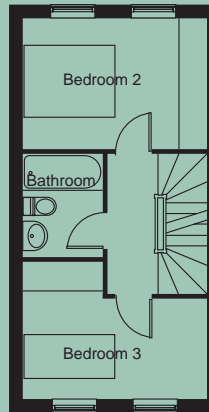
Three storey, 3 bedroom terraced houses



Ground Floor

Living room 3.85 x 4.65m max

Kitchen 1.75 x 3.15m max



First Floor

Bedroom 2 3.75 x 2.70m

Bedroom 3 2.45 x 3.75m max



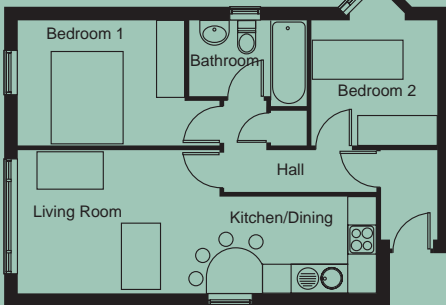
Second Floor

Bedroom 1 4.60 x 2.75m

EnSuite 3.85 x 1.80m max

All sizes are approximate and are taken from longest dimensions of each room

Charlton Mews apartments



Living room 4.15 x 3.00m

Kitchen/dining 3.30 x 2.00m

Bedroom 1 3.80 x 2.60m

Bedroom 2 2.60 x 2.30m

All sizes are approximate and are taken from longest dimensions of each room
This plan is a guideline only. Individual apartments may vary.

